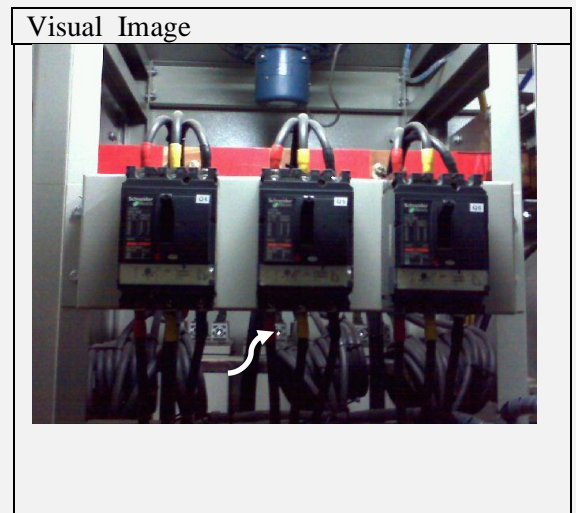
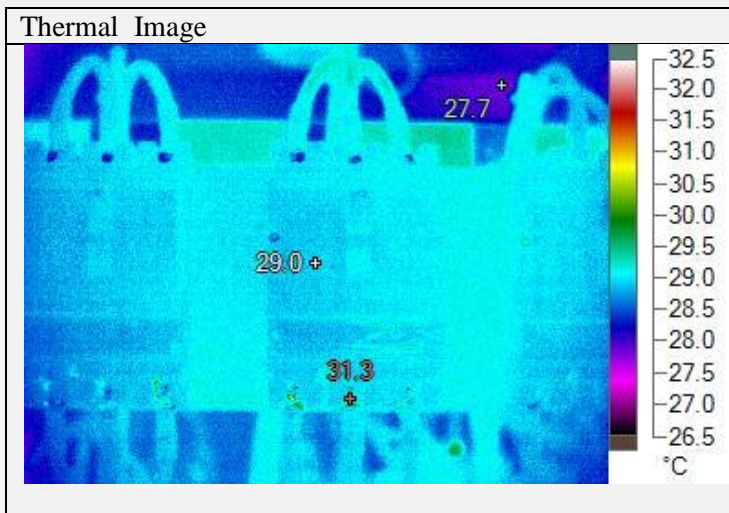


### INFRARED THERMOGRAPHY REPORT

Date	4 September 2012	Equipment	Cap.bank 1
From	PT. Rickstar Indonesia	Location equipment	
Client		Object	Mccb 125 A
Project		Image number	1
Project Location		Checked	



Classified Increase from temp. Maximum	
<b>A : <math>\leq</math> MAX.TEMP.</b>	<b>Normal for Data</b>
<b>B : <math>\geq</math> 1° C - 10° C</b>	<b>Need Attention</b>
<b>C : <math>\geq</math> 11° C - 20° C</b>	<b>Repaired as per scedule</b>
<b>D : <math>\geq</math> 21° C - 40° C</b>	<b>Repaired Immediately</b>
<b>E : <math>\geq</math> 40° C</b>	<b>Repaired Urgent</b>

Temperature Data (C°)	
Maximum Temperature On Spot	31,6
Reference Temperature	60
Temperature rise ( $\delta$ )	-
Clasification Code	A

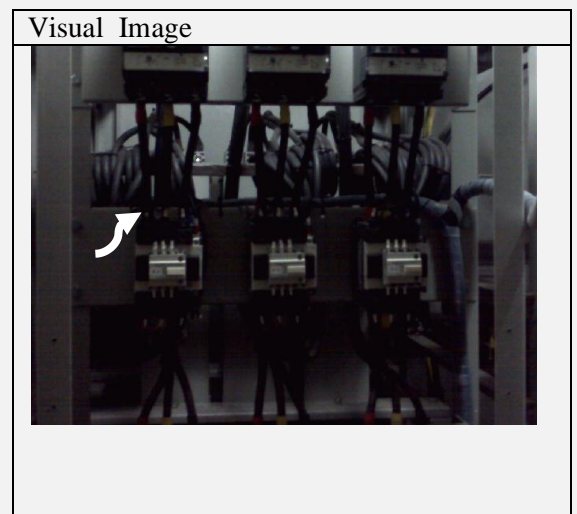
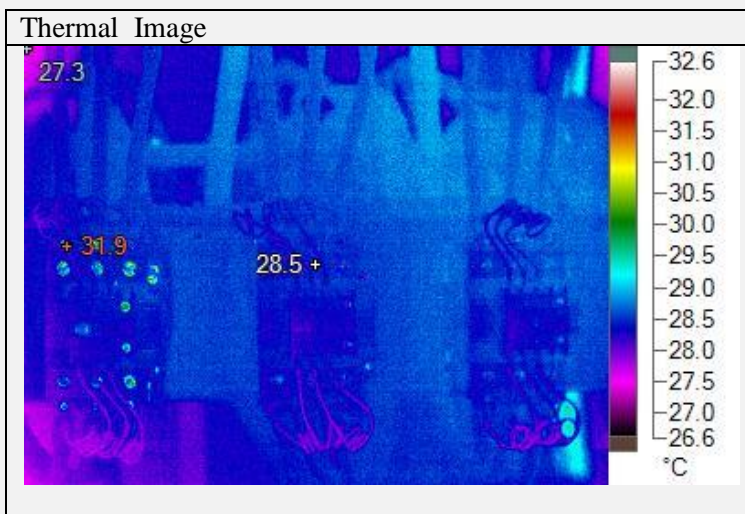
Probable Cause and Comments	
Temperature normal.	

RECOMMENDATION	
Lakukan Perawatan Berkala Tiap Tahun.	

FOLLOW UP BY MAINTENANCE STAFF	
Date	
Comment	
Sign By	

### INFRARED THERMOGRAPHY REPORT

Date	4 September 2012	Equipment	Cap.bank 1
From	PT. Rickstar Indonesia	Location equipment	
Client		Object	Contactora LCI-DWK12
Project		Image number	2
Project Location		Checked	



Classified Increase from temp. Maximum

<b>A : <math>\leq</math> MAX.TEMP.</b>	<b>Normal for Data</b>
<b>B : <math>\geq</math> 1° C - 10° C</b>	<b>Need Attention</b>
<b>C : <math>\geq</math> 11° C - 20° C</b>	<b>Repaired as per scedule</b>
<b>D : <math>\geq</math> 21° C - 40° C</b>	<b>Repaired Immediately</b>
<b>E : <math>\geq</math> 40° C</b>	<b>Repaired Urgent</b>

Temperature Data (C°)

Maximum Temperature On Spot	31,5
Reference Temperature	60
Temperature rise ( $\delta$ )	-
Classification Code	A

Probable Cause and Comments

Temperature normal.

RECOMMENDATION

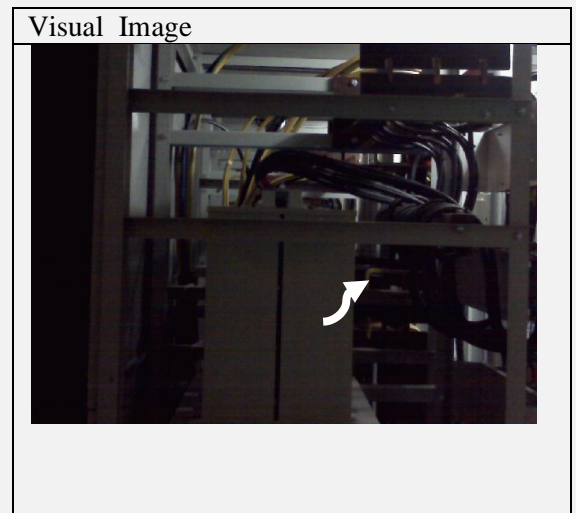
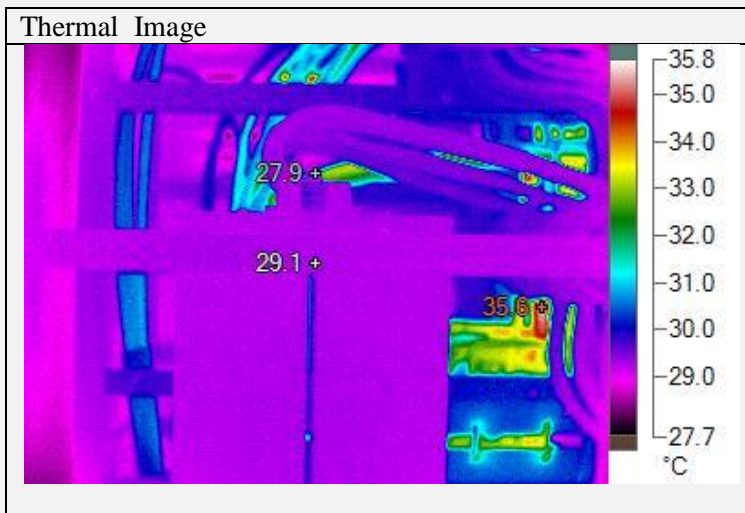
Lakukan Perawatan Berkala Tiap Tahun.

FOLLOW UP BY MAINTENANCE STAFF

Date	
Comment	
Sign By	

### INFRARED THERMOGRAPHY REPORT

Date	4 September 2012	Equipment	Cap.bank 1
From	PT. Rickstar Indonesia	Location equipment	
Client		Object	Capasitor
Project		Image number	3
Project Location		Checked	



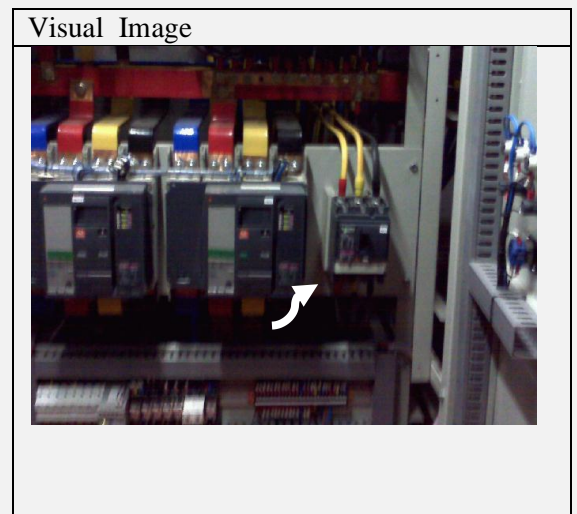
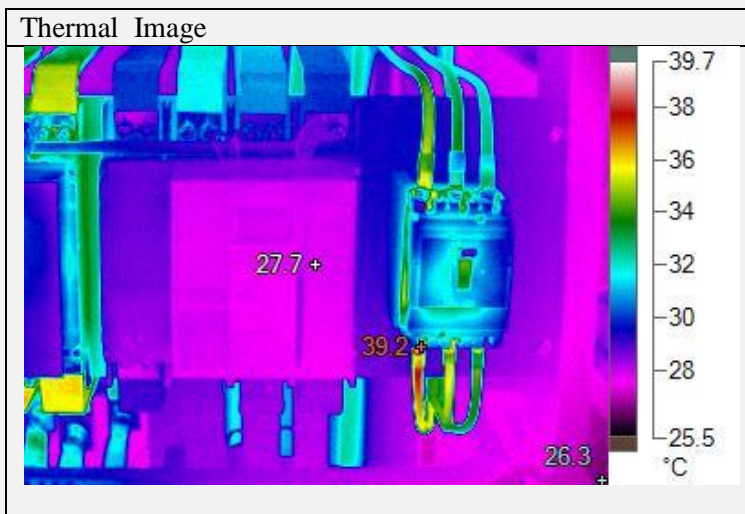
Classified Increase from temp. Maximum	
A : $\leq$ MAX.TEMP.	Normal for Data
B : $\geq$ 1° C - 10° C	Need Attention
C : $\geq$ 11° C - 20° C	Repaired as per scedule
D : $\geq$ 21° C - 40° C	Repaired Immediately
E : $\geq$ 40° C	Repaired Urgent

Temperature Data (C°)	
Maximum Temperature On Spot	35,6
Reference Temperature	60
Temperature rise ( $\delta$ )	-
Clasification Code	A

Probable Cause and Comments	
Temperature normal.	
RECOMMENDATION	
Lakukan Perawatan Berkala Tiap Tahun.	
FOLLOW UP BY MAINTENANCE STAFF	
Date	
Comment	
Sign By	

### INFRARED THERMOGRAPHY REPORT

Date	4 September 2012	Equipment	LVDP 1
From	PT. Rickstar Indonesia	Location equipment	
Client		Object	Mccb 100A
Project		Image number	4
Project Location		Checked	



Classified Increase from temp. Maximum	
<b>A : <math>\leq</math> MAX.TEMP.</b>	<b>Normal for Data</b>
<b>B : <math>\geq</math> 1° C - 10° C</b>	<b>Need Attention</b>
<b>C : <math>\geq</math> 11° C - 20° C</b>	<b>Repaired as per scedule</b>
<b>D : <math>\geq</math> 21° C - 40° C</b>	<b>Repaired Immediately</b>
<b>E : <math>\geq</math> 40° C</b>	<b>Repaired Urgent</b>

Temperature Data (C°)	
Maximum Temperature On Spot	39,2
Reference Temperature	60
Temperature rise ( $\delta$ )	-
Clasification Code	A

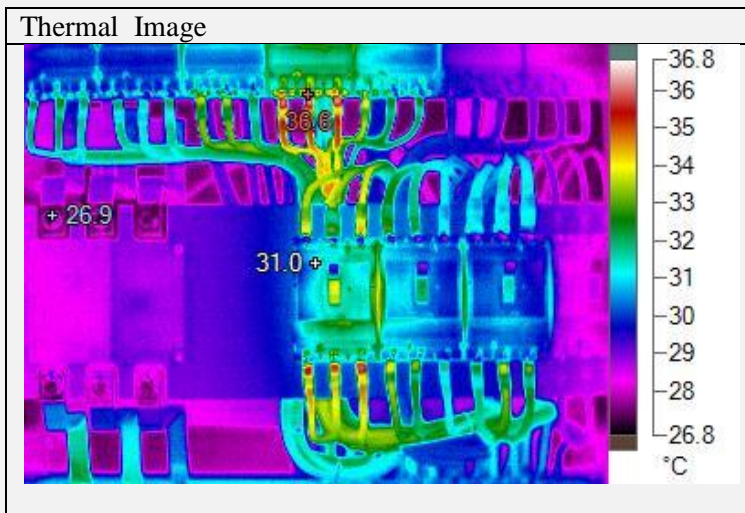
Probable Cause and Comments
Temperature Normal.

RECOMMENDATION
Lakukan Perawatan Berkala Tiap Tahun.

FOLLOW UP BY MAINTENANCE STAFF	
Date	
Comment	
Sign By	

### INFRARED THERMOGRAPHY REPORT

Date	4 September 2012	Equipment	LVDP 1
From	PT. Rickstar Indonesia	Location equipment	
Client		Object	Out Going Mccb 3p (Q2-Q12)
Project		Image number	5
Project Location		Checked	



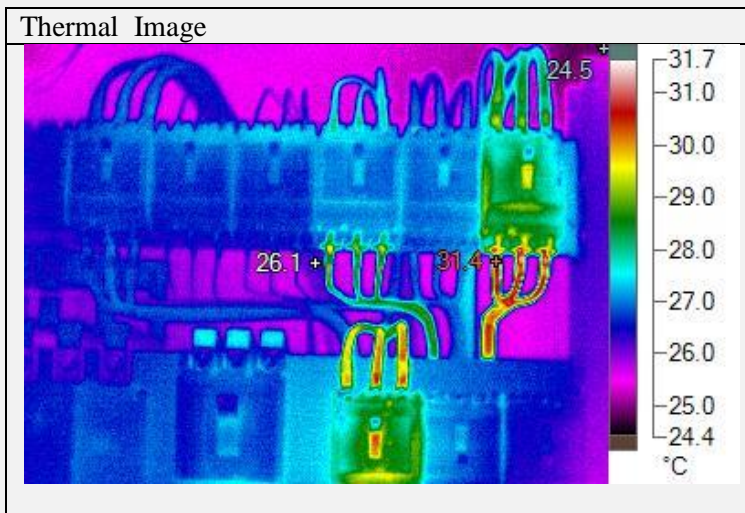
Classified Increase from temp. Maximum	
A : $\leq$ MAX.TEMP.	Normal for Data
B : $\geq$ 1° C - 10° C	Need Attention
C : $\geq$ 11° C - 20° C	Repaired as per scedule
D : $\geq$ 21° C - 40° C	Repaired Immediately
E : $\geq$ 40° C	Repaired Urgent

Temperature Data (C°)	
Maximum Temperature On Spot	36,7
Reference Temperature	60
Temperature rise ( $\delta$ )	-
Clasification Code	A

Probable Cause and Comments	
Temperature normal	
RECOMMENDATION	
Lakukan berkala tiap tahun	
FOLLOW UP BY MAINTENANCE STAFF	
Date	
Comment	
Sign By	

### INFRARED THERMOGRAPHY REPORT

Date	4 September 2012	Equipment	SDP
From	PT. Rickstar Indonesia	Location equipment	
Client		Object	Out going (Q0,Q2-Q12)
Project		Image number	6
Project Location		Checked	



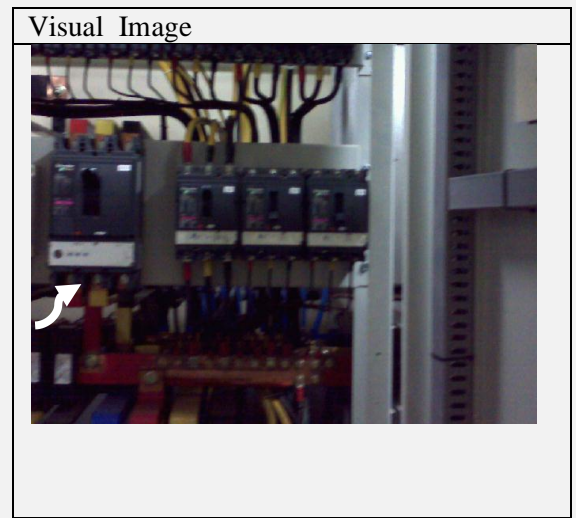
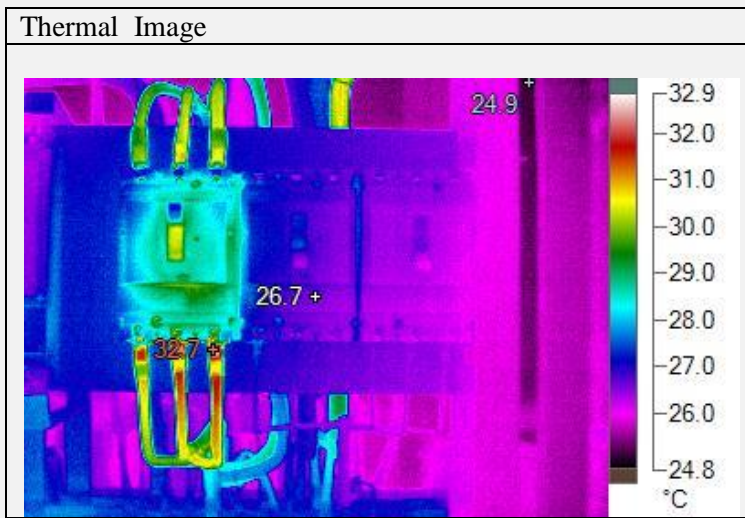
Classified Increase from temp. Maximum	
<b>A : <math>\leq</math> MAX.TEMP.</b>	<b>Normal for Data</b>
<b>B : <math>\geq</math> 1° C - 10° C</b>	<b>Need Attention</b>
<b>C : <math>\geq</math> 11° C - 20° C</b>	<b>Repaired as per scedule</b>
<b>D : <math>\geq</math> 21° C - 40° C</b>	<b>Repaired Immediately</b>
<b>E : <math>\geq</math> 40° C</b>	<b>Repaired Urgent</b>

Temperature Data (C°)	
Maximum Temperature On Spot	31,4
Reference Temperature	60
Temperature rise ( $\delta$ )	-
Clasification Code	A

Probable Cause and Comments	
Temperatur Normal.	
RECOMMENDATION	
Lakukan Perawatan Berkala Tiap Tahun.	
FOLLOW UP BY MAINTENANCE STAFF	
Date	
Comment	
Sign By	

### INFRARED THERMOGRAPHY REPORT

Date	4 September 2012	Equipment	SDP
From	PT. Rickstar Indonesia	Location equipment	
Client		Object	Out Going (Q4.6-Q4.16)
Project		Image number	7
Project Location		Checked	



Classified Increase from temp. Maximum	
A : $\leq$ MAX.TEMP.	Normal for Data
B : $\geq$ 1° C - 10° C	Need Attention
C : $\geq$ 11° C - 20° C	Repaired as per scedule
D : $\geq$ 21° C - 40° C	Repaired Immediately
E : $\geq$ 40° C	Repaired Urgent

Temperature Data (C°)	
Maximum Temperature On Spot	32,7
Reference Temperature	60
Temperature rise ( $\delta$ )	-
Clasification Code	A

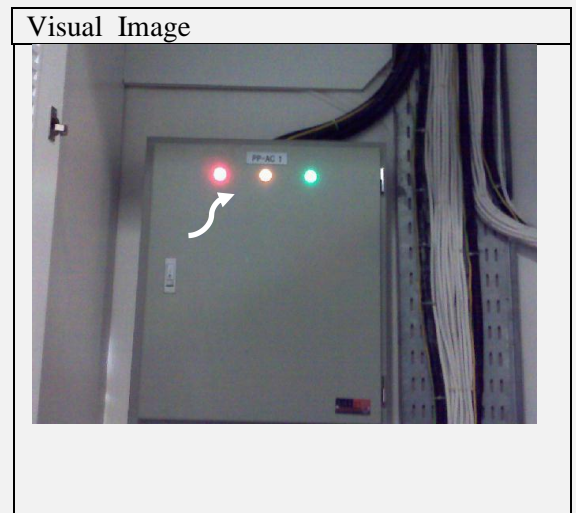
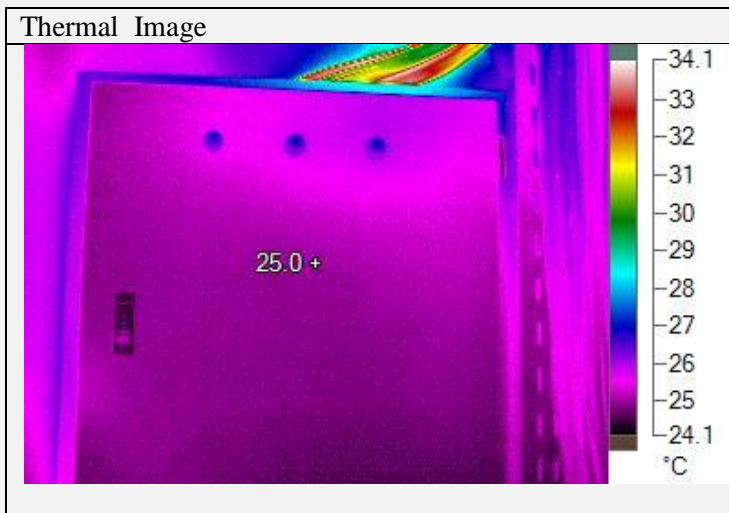
Probable Cause and Comments	
Temperatur Normal.	

RECOMMENDATION	
Lakukan Perawatan Berkala Tiap Tahun.	

FOLLOW UP BY MAINTENANCE STAFF	
Date	
Comment	
Sign By	

### INFRARED THERMOGRAPHY REPORT

Date	4 September 2012	Equipment	PP-AC 1
From	PT. Rickstar Indonesia	Location equipment	
Client		Object	Indicator Pilot Lamp
Project		Image number	8
Project Location		Checked	



Classified Increase from temp. Maximum	
<b>A : <math>\leq</math> MAX.TEMP.</b>	<b>Normal for Data</b>
<b>B : <math>\geq</math> 1° C - 10° C</b>	<b>Need Attention</b>
<b>C : <math>\geq</math> 11° C - 20° C</b>	<b>Repaired as per scedule</b>
<b>D : <math>\geq</math> 21° C - 40° C</b>	<b>Repaired Immediately</b>
<b>E : <math>\geq</math> 40° C</b>	<b>Repaired Urgent</b>

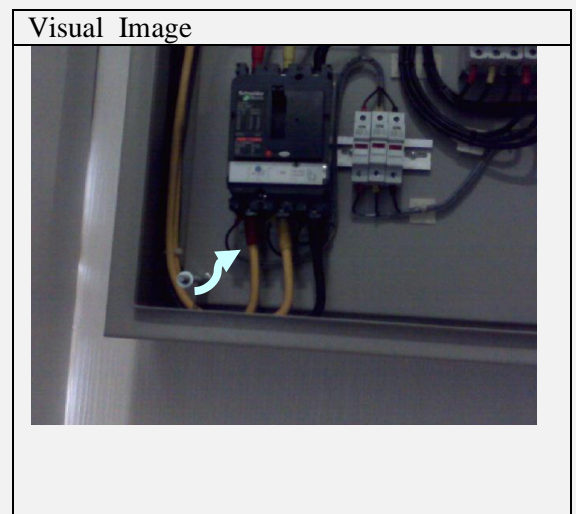
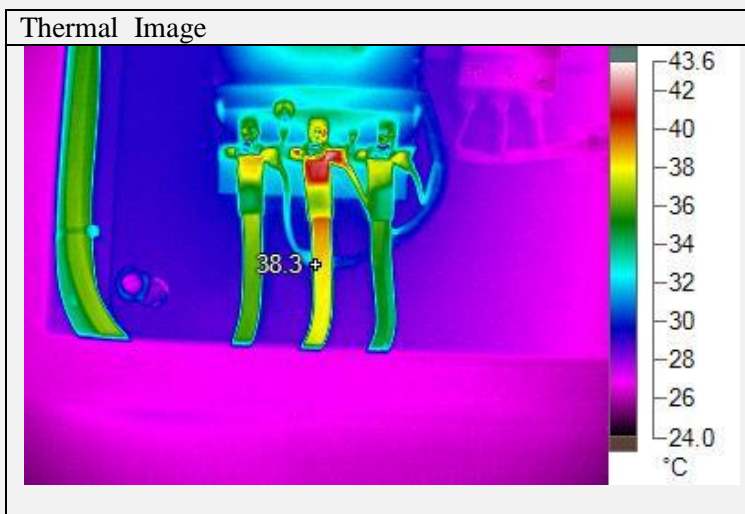
Temperature Data (C°)	
Maximum Temperature On Spot	26,3
Reference Temperature	60
Temperature rise ( $\delta$ )	-
Clasification Code	A

Probable Cause and Comments	
Temperature Normal	
RECOMMENDATION	
Lakukan Perawatan Berkala Tiap Tahun.	
FOLLOW UP BY MAINTENANCE STAFF	
Date	
Comment	
Sign By	



### INFRARED THERMOGRAPHY REPORT

Date	4 September 2012	Equipment	PP-AC 1
From	PT. Rickstar Indonesia	Location equipment	
Client		Object	Mccb Q0
Project		Image number	9
Project Location		Checked	



Classified Increase from temp. Maximum

<b>A : <math>\leq</math> MAX.TEMP.</b>	<b>Normal for Data</b>
<b>B : <math>\geq</math> 1° C - 10° C</b>	<b>Need Attention</b>
<b>C : <math>\geq</math> 11° C - 20° C</b>	<b>Repaired as per scedule</b>
<b>D : <math>\geq</math> 21° C - 40° C</b>	<b>Repaired Immediately</b>
<b>E : <math>\geq</math> 40° C</b>	<b>Repaired Urgent</b>

Temperature Data (C°)

Maximum Temperature On Spot	43,2
Reference Temperature	60
Temperature rise ( $\delta$ )	-
Classification Code	<b>B</b>

Probable Cause and Comments

Temperature Normal

**RECOMMENDATION**

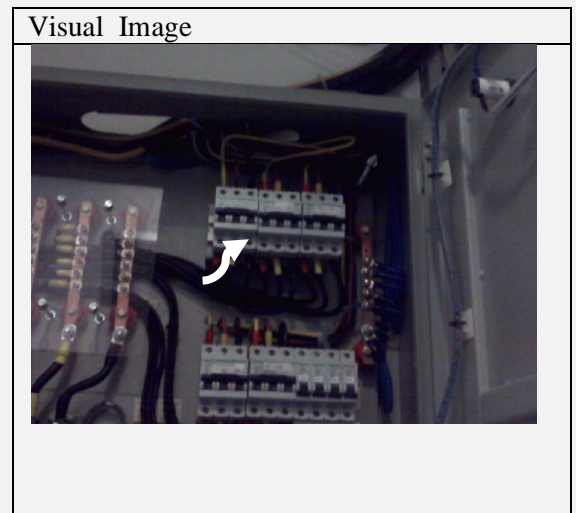
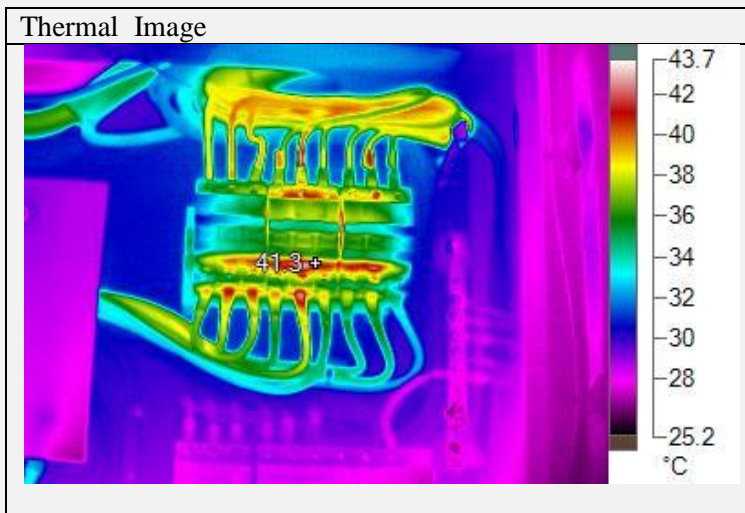
Lakukan Perawatan Berkala Tiap Tahun.

**FOLLOW UP BY MAINTENANCE STAFF**

Date	
Comment	
Sign By	

### INFRARED THERMOGRAPHY REPORT

Date	4 September 2012	Equipment	PP-AC 1
From	PT. Rickstar Indonesia	Location equipment	
Client		Object	Outgoing Q1-Q3
Project		Image number	10
Project Location		Checked	



Classified Increase from temp. Maximum	
A : $\leq$ MAX.TEMP.	Normal for Data
B : $\geq$ 1° C - 10° C	Need Attention
C : $\geq$ 11° C - 20° C	Repaired as per scedule
D : $\geq$ 21° C - 40° C	Repaired Immediately
E : $\geq$ 40° C	Repaired Urgent

Temperature Data (C°)	
Maximum Temperature On Spot	34,2
Reference Temperature	60
Temperature rise ( $\delta$ )	-
Clasification Code	A

Probable Cause and Comments	
Temperature Normal	
RECOMMENDATION	
Lakukan Perawatan Berkala Tiap Tahun.	
FOLLOW UP BY MAINTENANCE STAFF	
Date	
Comment	
Sign By	